



22271VIC Certificate IV in Bereavement Support

Course Prospectus



australian centre
for **grief** and
bereavement



Contents

Welcome	3
About the Australian Centre for Grief and Bereavement	4
22271VIC Certificate IV Bereavement Support	5
Why Choose Online Learning?	6
Course Outline	7
Unit Summaries	8
Who Can Enrol?	10
How Do I Find Out More?	10
Other ACGB Services	11

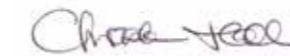
The Australian Centre for Grief and Bereavement is the largest provider of grief and bereavement education in Australia.

Welcome

Welcome, and thank you for considering the Australian Centre for Grief and Bereavement's Certificate IV in Bereavement Support.

The Australian Centre for Grief and Bereavement (ACGB) is an independent, not-for-profit organisation with a long history of delivering high quality national training and education. Since our commencement in 1996, we have grown to become the largest provider of grief and bereavement education in Australia, and in 2011, we became a Registered Training Organisation (RTO# 22004).

Recently the Aged Care sector has determined that there is a real need for a Certificate IV level, nationally recognised training program for bereavement support personnel. The Certificate IV in Bereavement Support, is a qualification that could also benefit personnel in counselling services, nursing, palliative care, social work, the funeral industry and others who provide bereavement support.



Christopher Hall

Chief Executive Officer

About the Australian Centre for Grief and Bereavement

The Australian Centre for Grief and Bereavement is a not-for-profit organisation established to provide a range of education, counselling, research and clinical services for those working in, and affected by, grief and bereavement.

The Australian Centre for Grief and Bereavement (ACGB) is an independent, not-for-profit organisation that was established in 1996 to provide a range of education, training, research and professional service options for those working in the area of grief and bereavement. Opportunities are available for those working with grieving people and for members of the community to attend seminars, workshops and courses, to undertake clinical work placements and to receive supervision. The organisation also provides a range of customised training.

ACGB is partially funded by the Victorian Government Department of Health to provide a statewide specialist bereavement service for individuals, children and families who need assistance following the death of someone close to them. A range of specialist bereavement services and programs are provided, including counselling, support groups, written resources, remembrance events and an information and referral telephone service.

High quality education

ACGB, as the largest provider of grief and bereavement education, offers evidence-based, high-quality education and training opportunities for health professionals, students, volunteers and any other individual or agency desiring to enhance grief and bereavement knowledge and practice. Education and training programs are offered as seminars, workshops, short and long courses, conferences and customised training that meets the specific needs of organisations and agencies.



22271VIC Certificate IV in Bereavement Support

Mode of Delivery: Online

Projected Course Completion: 12 Months

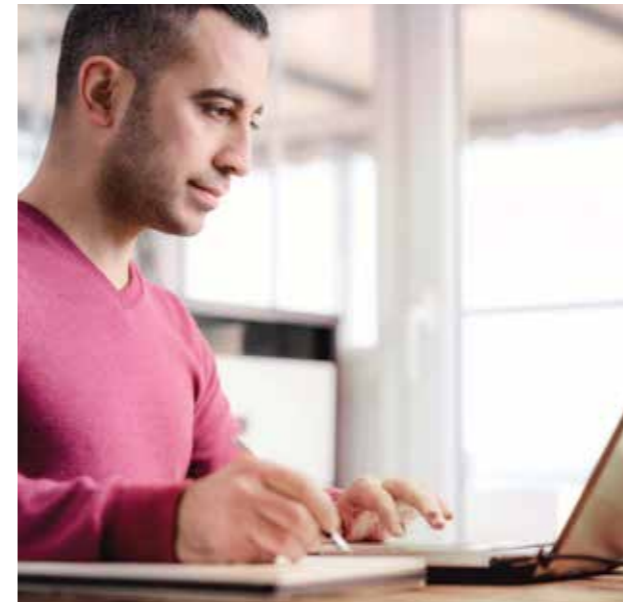
The Certificate IV in Bereavement Support (22271VIC) is a nationally recognised, VET qualification. This online course is designed for those who have a role in providing bereavement and loss support. The skills and knowledge provided by the course, cover a range of different situations and may be for a specific bereavement support job role, or complements other job roles such as nurses, aged care workers and teachers. This competency based course places emphasis, on what the learner can do in the workplace activities to industry standards.

All our trainers are highly experienced practitioners in the field of loss, grief and bereavement and through delivery of training within these areas. With additional support available in the form of phone and email, our industry-experienced trainers are here to help and support each learner throughout their learning journey.

Course outcomes

At the conclusion of this course, learners will be able to:

- Communicate effectively to provide support for those experiencing bereavement and loss
- Identify various types of bereavement and loss that might be experienced by a client
- Contribute to quality management processes in an organisation
- Recognise the impact of loss in the context of a client's experience
- Describe the theoretical frameworks that inform the field of loss, grief and bereavement
- Provide basic counselling
- Contribute to the building of capacity for provision of bereavement and loss support



Why Choose Online Learning?

Two key advantages of online learning are:

1. Flexibility
2. Convenience

Students can access their course content at any time, from any location on their computer, laptop or hand held device. This means that parents, working students, and professionals can pace their learning around their day-to-day lives.

Many students find online learning to be a more comfortable learning environment for them. With clever design and multimedia, online Learning Management Systems can prove to be a richer and more effective learning experience than traditional methods of face to face learning.

The online platform enables students to have all their tools for learning available to them, through our customised up to date Learning Management System. The course content and assessments have been strategically placed in this System to ensure the content material is relevant to the learner throughout their learning journey.

Many students find online learning to be a more comfortable learning environment for them.

Course Outline

The course offers a holistic approach to industry activities. While bereavement care and support work is the main focus of the course, the content also incorporates communication, capacity building and quality management and explores specific workplace duties as found in the real workplace environment.

The course consists of 11 compulsory units. Four units, focusing on bereavement care and support, have been written by the Australian Centre for Grief and Bereavement, using their significant expertise and in consultation with industry representatives (highlighted in bold in the listing below).

The remaining units were already in existence within various training packages and qualifications but have been imported into the Certificate IV in Bereavement Support and contextualised for the loss and bereavement industry.

Unit Code	Unit Title
VU21612	Apply theoretical principles of grief and loss
CHCCOM504B	Develop, implement and promote effective workplace communication
CHCCSL501A	Work within a structured counselling framework
SIFXIND003	Deal with grief responses
CHCCS426B	Provide support and care relating to loss and grief
VU21614	Apply grief and loss support strategies
VU21613	Provide support for grief and loss across the life span and among special populations
CHCAC318B	Work effectively with older people
VU21615	Respond holistically to grief and loss in aged and palliative care settings
BSBWOR501B	Manage personal work priorities and professional development
CHCORG423C	Maintain quality service delivery

- Units highlighted in blue have been created by The Australian Centre for Grief and Bereavement
- Units not highlighted have been used from existing training packages

Unit Summaries

VU21612 Apply theoretical principles of grief and loss

This unit provides the knowledge of grief and bereavement theory and principles and provides the learner with the skills to integrate the theoretical principles to assist people who are grieving.

CHCCOM504B Develop, implement and promote effective workplace communication

This unit describes the knowledge and skills required to apply higher-level communication skills that underpin effective workplace operations.

CHCCSL501A Work within a structured counselling framework

This unit describes the knowledge and skills required to work within the agency's agreed counselling model

SIFXIND003 Deal with grief responses

This unit describes the performance outcomes, skills and knowledge required to respond appropriately to client expressions of grief according to work health and safety, relevant legislation and workplace policies and procedures. It includes dealing effectively with colleague and personal grief.

CHCCS426B Provide support and care relating to loss and grief

This unit describes the knowledge and skills required to provide support for individuals who are experiencing loss, grief and bereavement

VU21614 Apply grief and loss support strategies

This unit describes the skills and knowledge required to determine and apply appropriate approaches for bereavement support interventions.

VU21613 Provide support for grief and loss across the life span and among special populations

This unit provides the knowledge and skills to support to people, suffering grief and loss across lifespan and among special populations. The unit will develop your knowledge of support services for clients with more complex needs.

CHCAC318B Work effectively with older people

This unit describes the skills and knowledge required by the worker to perform work that reflects understanding of the structure and profile of the residential aged care sector, the home and community sector and key issues facing older people in the community.

VU21615 Respond holistically to grief and loss in aged and palliative care settings

This unit describes the skills and knowledge required to support residents and carers in aged and palliative care settings effected by grief and loss. The unit also gives focus to support workers and organisations and how they experience and respond to grief and loss.

BSBWOR501 Manage personal work priorities and professional development

This unit describes the performance outcomes, skills and knowledge required to manage own performance and professional development. Particular emphasis is on setting and meeting priorities, analysis of information and using a range of strategies to develop further competence.

CHCORG423C Maintain quality service delivery

This unit describes the knowledge and skills required to perform work within a legislative and ethical framework to ensure the provision of high quality service delivery that supports the rights and interests of clients.

Who Can Enrol?

Entrants to the course should have as a minimum, a Certificate III level qualification in community services or related field or relevant experiences.

To enrol, follow the link http://www.grief.org.au/education/courses/cert_iv

This will guide you through the enrolment process.

National Recognition – Credit Transfer

Credit transfer is the process of granting participants credit for accredited study previously completed through another VET or Higher Education provider.

Having provided your Certificate or Statement of Attainment indicating a competent level of attainment in each of the units you apply for, the ACGB will verify these with the issuing RTO or through the Unique Student Identifier Number. The participant will be granted credit for the units of competency previously completed.

This must occur prior to commencement of the unit/s.

Recognition of Prior Learning (RPL)

Recognition of Prior Learning (RPL) is available where participants are able to demonstrate that they already have the competencies specified in the description of any of the units that are required for the Certificate IV in Bereavement Support qualification.

How Do I Find Out More?

For more information about our online course; Certificate IV in Bereavement Support, please don't hesitate to contact the Australian Centre for Grief and Bereavement on (03) 9265 2100, email courses@grief.org.au or visit our website www.grief.org.au.



Other ACGB Services

Bereavement Counselling and Support Service

ACGB operates a statewide Specialist Bereavement Counselling and Support Service and has counsellors located across metropolitan Melbourne and in regional areas (Grampians, Gippsland, Hume, Barwon South-West, and Loddon Mallee). For further information, call **1300 664 786** or email counselling@grief.org.au

Support groups

ACGB operates a range of support groups including groups for adults, children, bereaved partners, loss of a parent and many more. For further information call **(03) 9265 2100** or email support@grief.org.au

Practitioner Consultancy Service

This service provides free information, consultation and support for practitioners who are working with clients experiencing complex and prolonged bereavements. To access this service call **1300 858 113** during business hours.

Volunteering

Volunteering opportunities are available for those who wish to become involved in the implementation of ACGB services and programs. For more information contact the Centre on **(03) 9265 2100** or email info@grief.org.au

Education and training

ACGB offers quality education and training opportunities for health professionals, students, volunteers and any other individual or agency desiring to enhance grief and bereavement knowledge and practice. Education and training programs are offered as seminars, workshops, courses, conferences and customised training that meet the specific needs of organisations and agencies. For full details of all programs and services offered go to www.grief.org.au/education

Customised training and consultancy

ACGB offer a range of customised training and consultancy services that provide research-informed, high quality, professional development programs that meet the specialist training needs of organisations, groups and individuals. For further information contact the Centre on **1800 642 066** or email education@grief.org.au

Grief Matters: The Australian Journal of Grief and Bereavement

Published by ACGB three times per year, this journal encompasses both academic and applied aspects of grief and bereavement and is a ranked journal with the Australian Research Council as part of the Excellence in Research for Australia (ERA) initiative (www.arc.gov.au).

For further information on how you can subscribe to this journal, call **1800 642 066** or email griefmatters@grief.org.au

Internships

ACGB has a limited number of placement opportunities for experienced counsellors seeking to advance their knowledge and skills in bereavement counselling. For further information contact us on **(03) 9265 2100** or email counselling@grief.org.au

Membership

Access a range of benefits through the Australian Centre for Grief and Bereavement membership program. An enhanced membership option, reciprocal membership with the Association for Death Education and Counseling (ADEC), is also available. For more information about membership options and benefits go to www.grief.org.au/get_involved or call **1800 642 066**.

Donations

Donations over \$2 are tax deductible and allow ACGB to continue to provide services including bereavement counselling, support groups, newsletters, events and education and training. To make a donation, visit www.grief.org.au or call **1800 642 066**.

Follow us! www.facebook.com/griefaustralia www.twitter.com/tweet_acgb



Australian Centre for Grief and Bereavement
253 Wellington Road, Mulgrave VIC 3170
Telephone (03) 9265 2100
Facsimile (03) 9265 2150

Email info@grief.org.au

ABN: 22 038 903 478
ACN: 159 297 444
RTO: 22004